

Stormwater is defined by the U.S. Environmental Protection Agency as:

Rainwater and melted snow that runs off streets, lawns, farms, and construction and industrial sites.

Stormwater flows over impervious surfaces (those that do not allow water to pass through), carrying pollution we leave behind to our lakes, rivers, creeks, streams, and ponds.



The City's waterways can be polluted through:

❖ **Illicit Discharges**

- Any discharge to the storm sewer system that is not composed entirely of stormwater

❖ **Illicit Connections**

- Any conveyance or connection to the storm sewer system without a permit

❖ **Illegal Dumping**

- The act of intentionally dumping waste into the storm sewer system



**TO REPORT AN ILLICIT
DISCHARGE, ILLICIT
CONNECTION, OR ILLEGAL
DUMPING**

PLEASE CALL OUR

24 HOUR

CUSTOMER CARE CENTER

704-920-5555

Questions?

Contact the City of Concord Stormwater Services
Department at:

704-920-5360

Brown Operations Center
635 Alfred Brown Jr Court SW
Concord, NC 28025

**Stormwater
Pollution and
Illicit Discharges for
Industrial
Businesses**



Did you know...

Our storm drains lead directly into waters we use for swimming, fishing and drinking?

Learn how your business can prevent stormwater pollution and avoid penalties!

Common Illicit Discharges from Industrial Businesses

- Dumping mop water onto pavement or down a storm drain
- Excessive amounts of pesticides, herbicides, or fertilizer
- Grass clippings and leaves blown onto pavement



- Improper storage of chemicals
- Washing dumpsters and dumpster areas with water
- Improper vehicle or equipment maintenance
- Stained pavement from spilled oil
- Washing vehicles or other equipment on pavement with no oil-water separator
- Excess sediment from construction activities

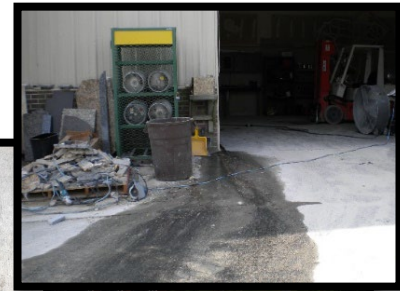
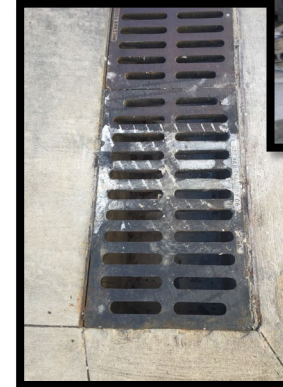


Ways to Prevent Illicit Discharges...

- ❖ Wash vehicles & machinery over grass or at a commercial carwashes
- ❖ Regularly inspect vehicles and equipment to prevent leaks
- ❖ Do not blow grass clippings or other yard waste onto pavement
- ❖ Sweep up extra fertilizer/chemicals from pavement – do NOT spray with water
- ❖ Clean floor mats, filters, trash cans, etc. in a mop sink or floor drain connected to the sanitary sewer system
- ❖ Pour wash water into a janitorial or mop sink



- ❖ Recycle or properly dispose of chemicals and automobile fluids
- ❖ Store chemicals in a secure area to reduce spills
- ❖ Make sure all sinks are piped to the sanitary sewer system, NOT the storm sewer system!
- ❖ Keep dumpster lids closed
- ❖ Avoid washing dumpsters and dumpster areas with water to prevent pollutants from flowing into nearby storm drains
- ❖ Use dry methods for spill clean up – do NOT hose down spills



Civil Penalties

It is illegal to intentionally dump anything that is not stormwater down a storm drain. If an illicit discharge is investigated at your business, you will be responsible for **all clean-up costs**. If the issue is not remediated, you may be subject to a **civil penalty** of up to **\$1,000 per day**.

